

Complete Comfort II™

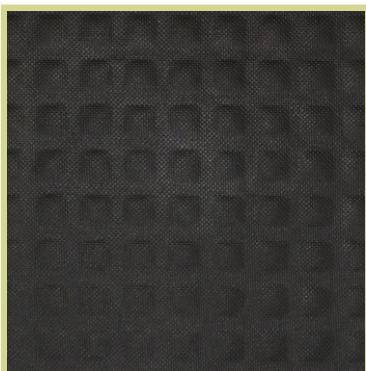


- Made with 100% Nitrile Rubber for superior grease and oil resistance.
- Anti-microbial treatment reduces odors by inhibiting the growth of germs and bacteria.
- Beveled edges create a smooth floor-to-mat transition, reducing slip and falls and allowing carts to easily roll over the surface.
- Textured surface offers superior slip and skid resistance.

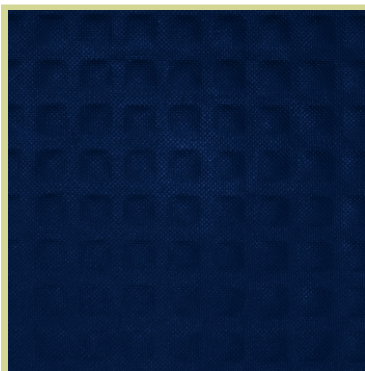
Indoor | Anti-Fatigue
Lauderable

Standard Sizes:

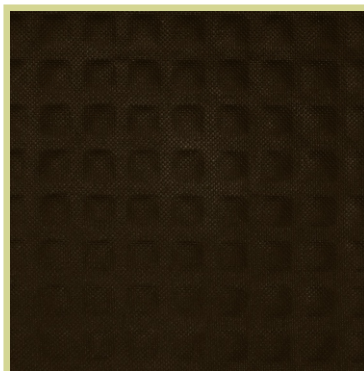
- 2' x 3'
- 3' x 4'
- 3' x 5'
- 4' x 6'



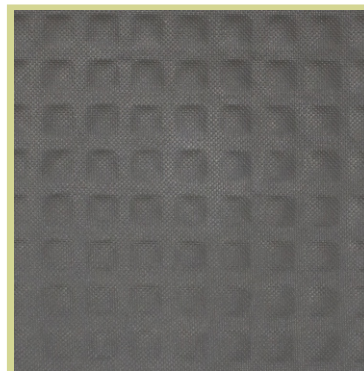
Black



Blue



Chocolate



Grey